



'we always care'

ROYAL LANCASTER LONDON

MEETINGS AND EVENTS



ROYAL LANCASTER LONDON

MEETINGS AND EVENTS

For over 50 years Royal Lancaster London has been renowned as one of Europe’s leading event venues.

Magnificent event spaces, stylish meeting and conference rooms, excellent facilities and exquisite cuisine combine with exceptional world class service.



HOSTING REMARKABLE MEETINGS & EVENTS FOR OVER 50 YEARS

In our 50 year history we have organised numerous spectacular global events.

Being one of London's few privately owned hotels, gives us the freedom to be able to say 'yes', and make the most extraordinary events a reality.

Our range of facilities is unparalleled with over 400 beautiful bedrooms, magnificent event spaces and stylish meeting rooms catering for every type and size of gathering, from corporate events to weddings and celebrations.

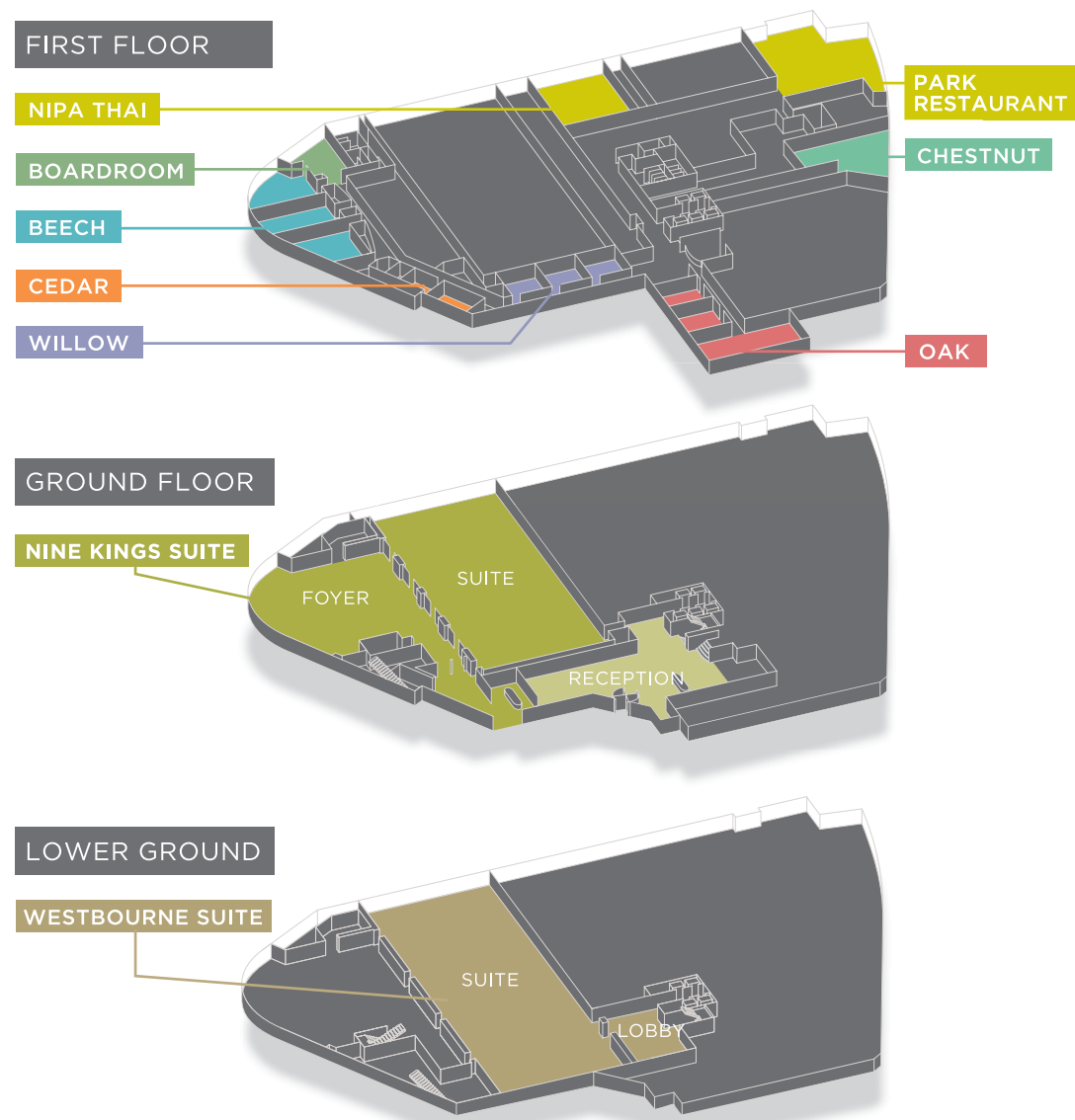
We are proud of our reputaion for great service; we believe service is delivered and experience is taken away. We are here to create memorable events'

Our "We Always Care" ethos is the foundation of our award winning team.



From major events, weddings and functions to private meetings and dinners we have a range of impressive and elegant spaces.

Our contemporary Forest Suites provide for small to medium scale presentations, meetings and gatherings whilst our magnificent Westbourne Suite and impressive Nine Kings Suite with private entrances and pillar-free space cater for many of London's most prestigious grand scale events.



CONTENTS

- 8 **WESTBOURNE SUITE**
A spectacular world class international venue accommodating up to 1500 guests.
- 10 **NINE KINGS SUITE**
Widely acclaimed as Europe's finest venue for truly remarkable large scale events.
- FOREST SUITES**
- 14 **BEECH SUITE**
A versatile space with Hyde Park views for up to 200 guests.
- 15 **BOARDROOM**
An elegant room with Hyde Park views for 12 to 16 guests.
- 16 **CHESTNUT SUITE**
Receptions, dinners or presentations for 30 to 40 guests.
- 17 **OAK SUITE**
Private and flexible spaces for up to 150 guests.
- 18 **CEDAR SUITE**
Two stylish rooms accomodating up to 14 guests.
- 19 **WILLOW SUITE**
Three well equipped rooms for up to 16 guests.

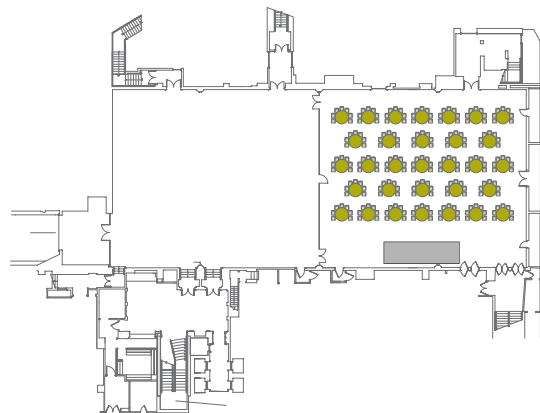
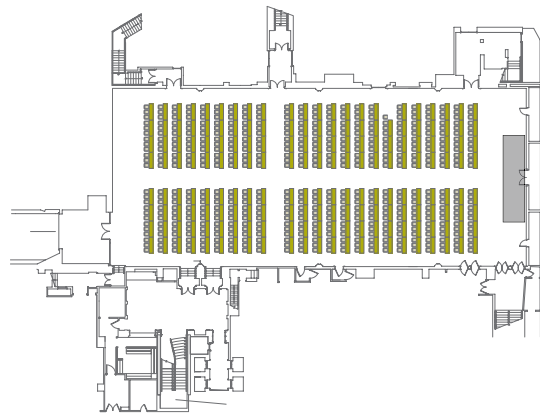
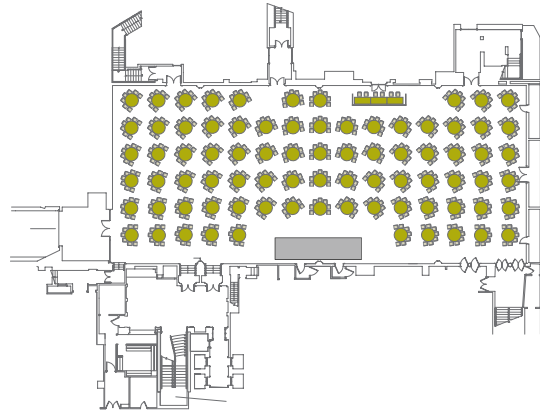
DIMENSIONS

Floor Area	10850 sq ft	1008 m²
Width	66 ft	20 metres
Length	158 ft	48 metres
Height	10 ft	3 metres

CAPACITY

Reception / Drinks	1500
Lunch / Dinner (no stage)	900
Dinner / Dance	750
Sit Down Buffet	780
Theatre (Front Projection)	1000
Theatre (Back Projection)	850
Classroom (Front Projection/ Slim Tables)	550
Classroom (Back Projection/ Slim Tables)	500
Cabaret (Front Projection)	640
Cabaret (Back Projection)	560
Exhibition (based on 3x2)	57
Awards Dinner (Front Projection)	800
Awards Dinner (Back Projection)	700

*All capacities are quoted without catering



WESTBOURNE SUITE

A spectacular venue with state-of-the-art technology, exceptional service and facilities.

One of Europe’s leading and most technically advanced venues with ighting, sound and visual technology ingeniously designed to save clients time and money. A powerful multi- zoned Bose audio system, built-in LED lighting and ceiling sparkle lights are matched by 63amp three-phase power supplies located in every section.

The suite can be split into four separate areas. Its load-bearing hanging bars are recessed out of sight into the ceiling.

Talk to our award winning team who have the experience to ensure that your bespoke event will be absolutely exceptional.

- Over 1000 square metres of pillar free space.
- Large off-street access providing easy delivery and installation makes this a choice venue for car launches.
- A sweeping marble staircase makes a grand entrance from the hotel lobby.
- Dedicated cloakroom and reception.
- Comfortably accomodates up to 1500 guests.



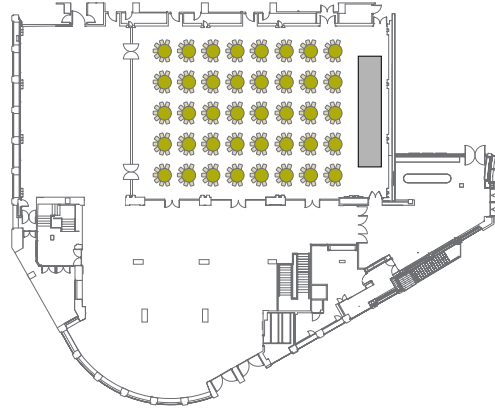
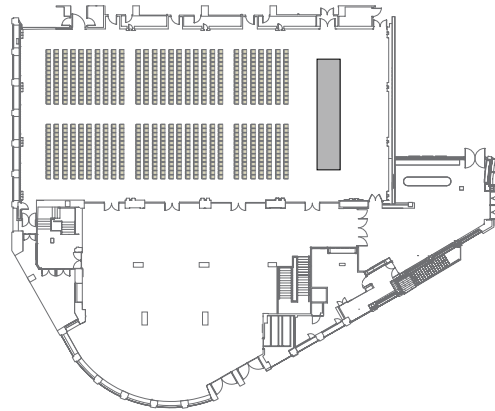
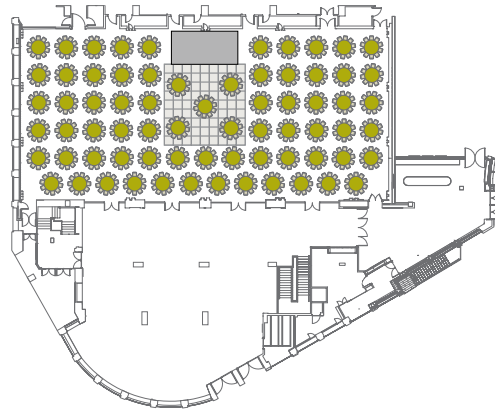
DIMENSIONS

Floor Area	13595 sq ft	1263 m²
Width	62 ft	18.9 metres
Length	131 ft	40 metres
Height	14 ft	4.2 metres

CAPACITY

Reception / Drinks	1500
Lunch / Dinner	1100
Dinner / Dance	1050
Sit Down Buffet	950
Theatre (Front Projection)	950
Theatre (Back Projection)	800
Classroom (Front Projection/Slim Tables)	500
Classroom (Back Projection/Slim Tables)	440
Cabaret (Front Projection)	520
Cabaret (Back Projection)	464
Exhibition (based on 3x2)	55
Awards Dinner (Front Projection)	1050

*All capacities are quoted without catering



NINE KINGS SUITE

Whatever the event it's vast scale and adaptability are unparalleled. A spectacular venue benefitting from natural daylight and a spacious foyer. A truly experiential space.

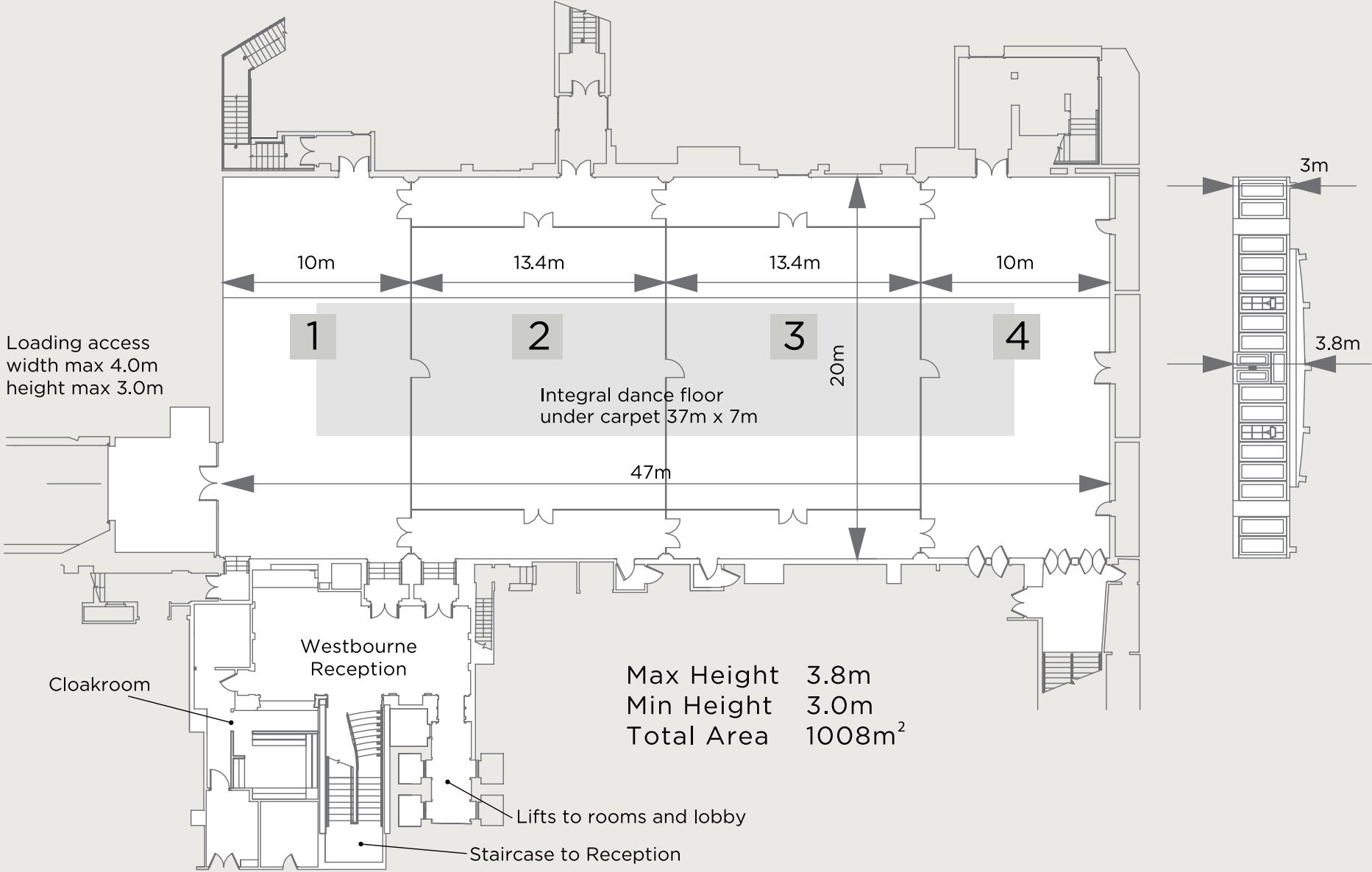
- Spectacular pillar free space.
- Stunning private entrance and foyer.
- An integral staircase connects the Westbourne Suite for larger events.
- Dedicated cloakroom and reception area.
- Comfortably accomodates up to 1200 guests.

The Nine Kings Suite is acknowledged as one of the finest venues in Europe for dinners, awards, conventions, product launches and much more. Its scale and adaptability are a winning combination.

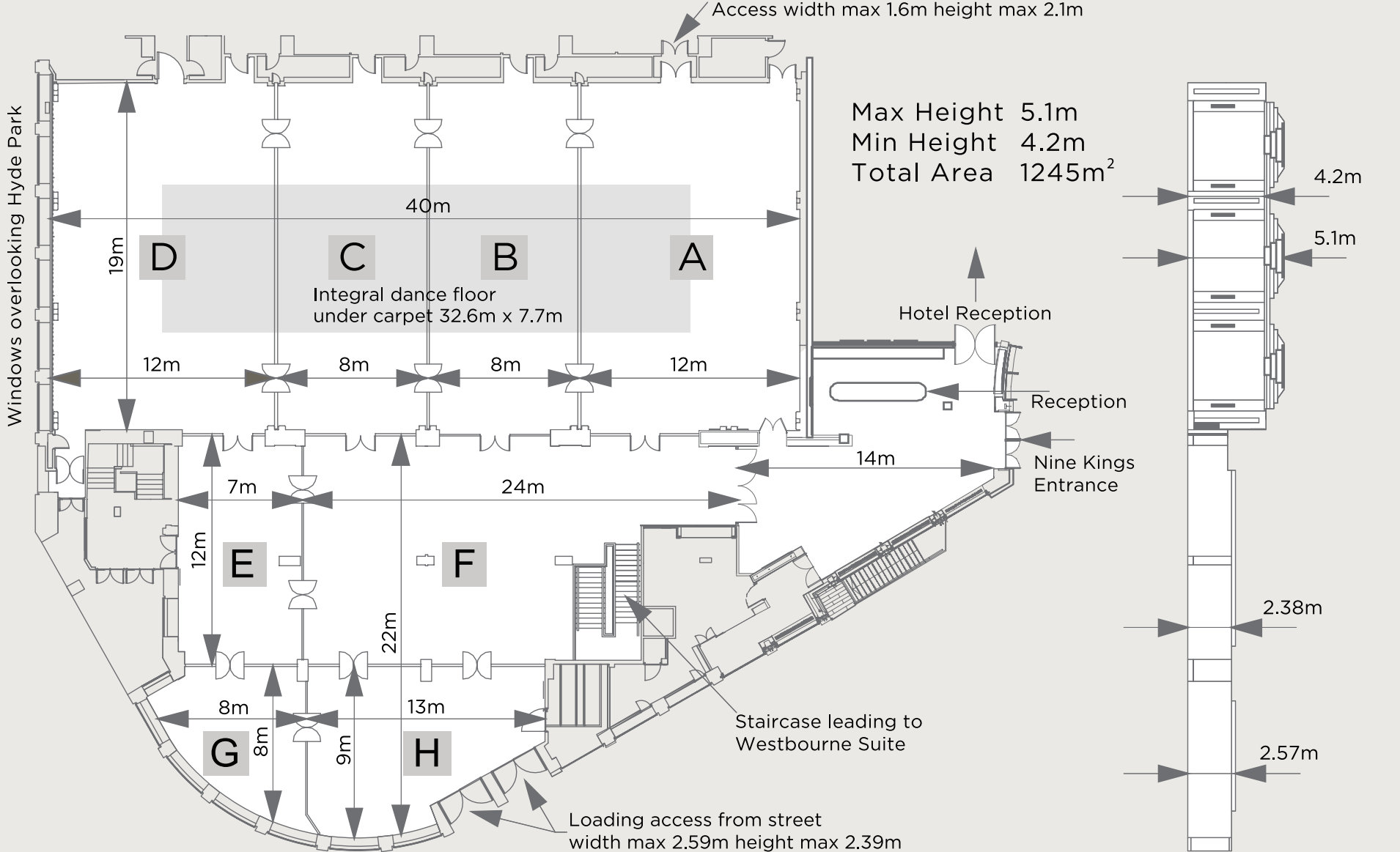
The large foyer is ideal for receptions, exhibitions and registration, whilst the main suite is divisible into four separate areas with acoustic-dampened partitions that can be controlled at the touch of a button.



WESTBOURNE SUITE



NINE KINGS SUITE

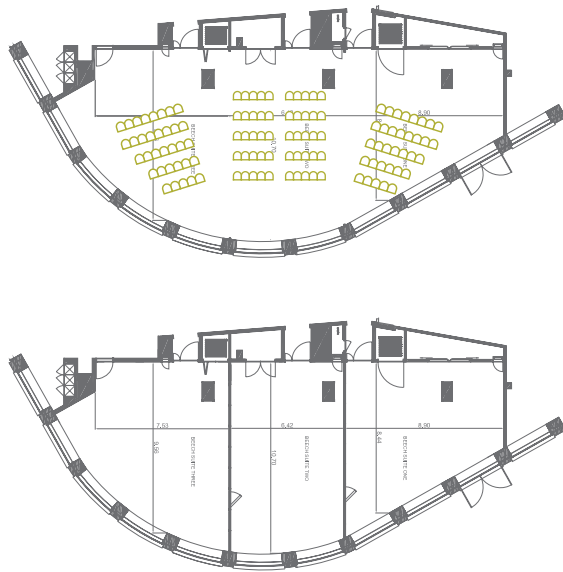


THE FOREST SUITES

BEECH SUITE

The largest amongst the Forest suite spaces, Beech strikes a great first impression with huge picture windows providing daylight and views over Hyde Park.

This space can be used as a single meeting room for up to 150 or partitioned into three separate areas. The shape of the room allows extra space for displaying materials and digital signage at each entrance.

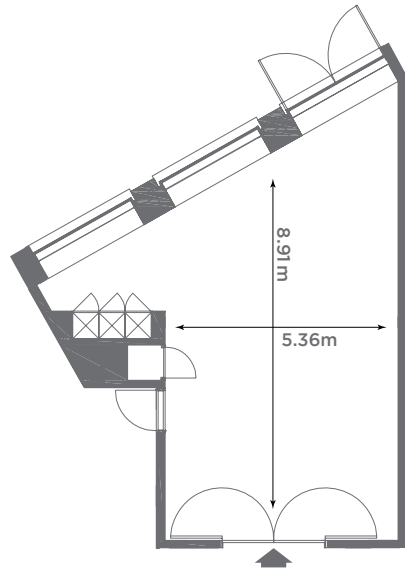


THE FOREST SUITES

BOARDROOM

The Boardroom is perfect for medium sized meetings of up to 16 delegates. As well as connecting directly to the Beech Suite for larger events, the space features floor-to-ceiling windows overlooking Hyde Park, a private

cloakroom, a specially commissioned large table and dark wood panelling that create a sophisticated ambiance.



DIMENSIONS

Floor Area	2205 sq ft	205 m²
Width	24 ft	7.3 metres
Length	75 ft	22.7 metres
Height	8 ft	2.48 metres

CAPACITY

Reception / Drinks	150
Lunch / Dinner	90
Theatre (Front Projection)	120
Classroom (Front Projection/ Slim Tables)	68
Cabaret (Front Projection)	70
Boardroom (Front Projection)	46
U Shape (Front Projection)	48

*All capacities are quoted without catering

DIMENSIONS

Floor Area	570 sq ft	53 m²
Width	16 ft	5 metres
Length	29 ft	9 metres
Height	8 ft	2.48 metres

CAPACITY

Reception / Drinks	40
Boardroom	16

*All capacities are quoted without catering

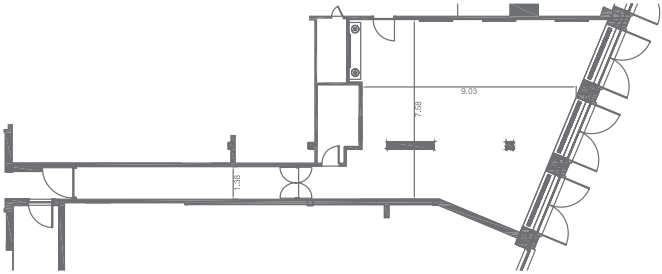


THE FOREST SUITES

CHESTNUT SUITE

Located off the first floor lift lobby with windows overlooking Westbourne terrace the Chestnut Suite blends fresh contemporary style with Art Deco overtones, decorated with sophisticated fabric and stone panelling in warm tones.

Whether it's for a meeting, drinks reception or a space for private dining – this versatile room's design can be transformed to match all requirements.

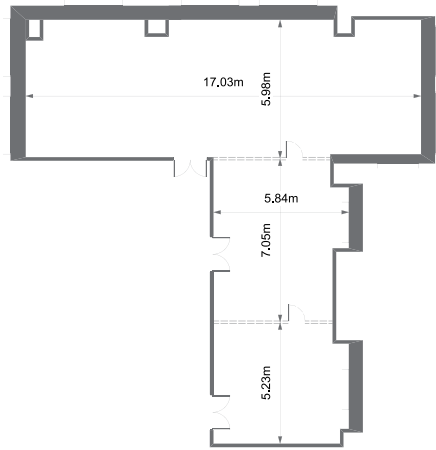


THE FOREST SUITES

OAK SUITE

This modern and elegant trio of meeting rooms is situated on a private corridor away from all of our other spaces, ensuring privacy and quiet. Overlooking the bright marble lobby with natural daylight, the floor-to-ceiling windows can be

partially or fully blacked out if you prefer. Oak is a versatile space that can be arranged as a single venue for up to 150 guests, or as two or three smaller individual rooms.



DIMENSIONS

Floor Area	872 sq ft	81 m ²
Width	23 ft	7 metres
Length	29 ft	9 metres
Height	8 ft	2.5 metres

CAPACITY

Reception / Drinks	50
Lunch / Dinner	30
Theatre	40
Cabaret	32
Boardroom	24
U Shape	20

*All capacities are quoted without catering

DIMENSIONS OAK 3

Floor Area	1100 sq ft	102 m ²
Width	20 ft	6 metres
Length	55 ft	17 metres
Height	8 ft	2.35 metres

CAPACITY

Reception / Drinks	100
Theatre (Front Projection)	120
Classroom (Front Projection / Slim Tables)	60
Cabaret (Front Projection)	60
Dinner	80

*All capacities are quoted without catering

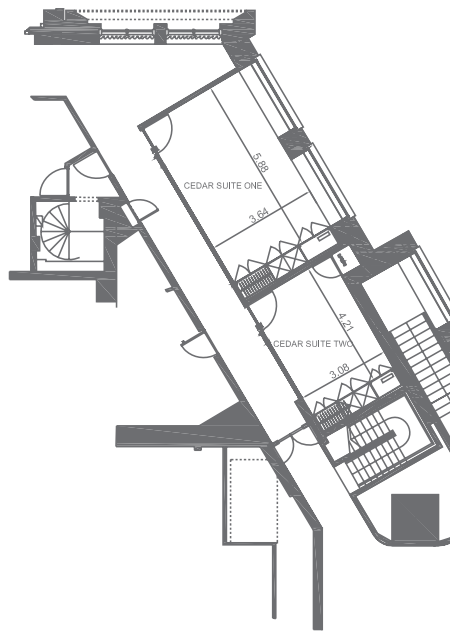


THE FOREST SUITES

CEDAR SUITE

The Cedar Suite consists of two adjacent rooms - perfect for meetings of up to 14 delegates, with floor to ceiling windows creating a bright and airy space.

The following dimensions are for Cedar 1, Cedar 2 can be used as a storage or office.



DIMENSIONS

Floor Area	226 sq ft	21 m ²
Width	10 ft	3 metres
Length	17 ft	5 metres
Height	7 ft	2 metres

CAPACITY CEDAR 1

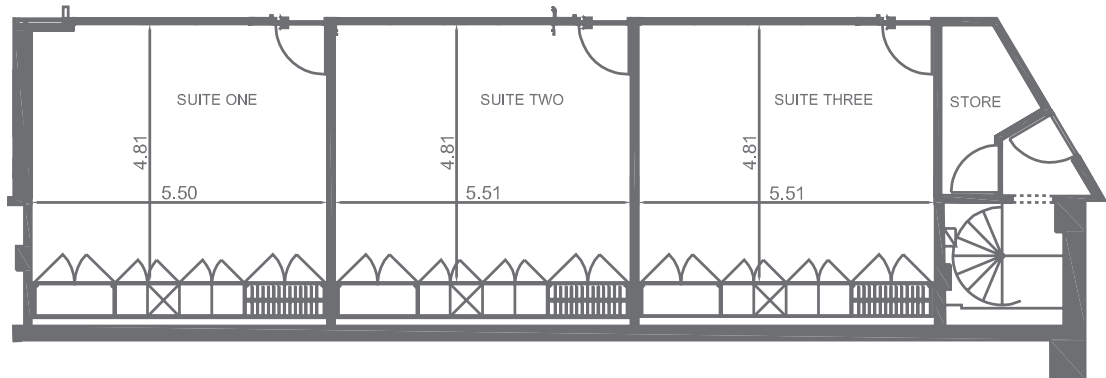
Theatre	14
Cabaret	8
Boardroom	12
U Shape	10

*All capacities are quoted without catering

THE FOREST SUITES

WILLOW SUITES

The Willow Suite consists of three well equipped rooms, which can accommodate up to 14 delegates as boardroom style. Each room offers floor to ceiling windows overlooking the bright and airy hotel atrium. There is plenty of space within the suite for tea & coffee breaks and for lunch service.



DIMENSIONS

Floor Area	291 sq ft	27 m ²
Width	13 ft	4 metres
Length	17 ft	5 metres
Height	7 ft	2 metres

CAPACITY

Theatre	16
Classroom	12
Cabaret	8
Boardroom	14
U Shape	10

*All capacities are quoted without catering



CAPACITIES

	Reception Drinks	Lunch/Dinner	Sit Down Buffett	Theatre		Classroom		Cabaret	
				FP	BP	FP	BP	FP	BP
WESTBOURNE	1500	900	780	1000	850	552	504	640	560
NINE KINGS	1500	1150	980	950	800	500	440	520	464
BEECH SUITE	150	60		120		68		90	
BEECH 1	50			40		16		24	
BEECH 2	50			50		28		32	
BEECH 3	50			40		20		24	
BOARDROOM	40			30		18		24	
CHESTNUT	50	30		40		32		32	
OAK SUITE	100	80		120					
OAK 1	15	10		20		8		8	
OAK 2	25	20		30		16		16	
OAK 1 + 2	40	40		50		30		32	
OAK 3	70	70		70		42		40	
CEDAR 1	15			14				8	
CEDAR 2				8					
WILLOW 1	20			16		12		8	
WILLOW 2	20			16		12		8	
WILLOW 3	20			16		12		8	

Capacities are dependent on the scope of production for each event.

Boardroom	U shape	Width		Length		Max Height		Area		
		FEET	METRES	FEET	METRES	FEET	METRES	SQ FEET	SQ METRES	
		66.9	20.4	159.77	48.7	10.49	3	10850	1008	WESTBOURNE
		62	18.9	133.85	40.8	13.77	4.2	13595	1263	NINE KINGS
46	48	23.95	7.3	74.54	22.72	8.2	2.48	2205	205	BEECH SUITE
24	16	29.4	8.94	24.08	7.34	8.2	2.48	699	65	BEECH 1
24	20	20.8	6.3	33.56	10.23	8.2	2.48	710	66	BEECH 2
24	16	24.6	7.48	28.01	8.54	8.2	2.48	699	65	BEECH 3
16	20	17.5	5.32	29.9	9.06	8.2	2.48	570	53	BOARDROOM
24	20	24	7.3	29.61	9.03	8.2	2.5	872	81	CHESTNUT
								1657	154	OAK SUITE
10	12	16.1	4.13	20.6	6.24	7.8	2.35	334	31	OAK 1
16	16	23.7	7.19	20.6	6.24	7.8	2.35	430	40	OAK 2
30	25	20.6	6.24	40.5	12.32	7.8	2.35	764	71	OAK 1 + 2
30	30	20	6.04	55	17	7.8	2.35	1100	102	OAK 3
12	10	11.1	3.62	19.6	5.95	8.2	2.48	226	21	CEDAR 1
8		10.4	3.14	13.8	4.18	8.2	2.48	140	13	CEDAR 2
14	10	15.8	4.77	17.9	5.41	8.2	2.48	280	26	WILLOW 1
14	10	15.5	4.69	18	5.49	8.2	2.48	291	27	WILLOW 2
14	10	15.4	4.67	18	5.49	8.2	2.48	291	27	WILLOW 3

A WEALTH OF FACILITIES



THE SENSES ROOM

As an event organiser, you will want to check your colour scheme, lighting and table planning prior to the big event.

Our renowned Senses Room, an innovative concept, not only allows for menu-tasting, but a complete preview of your entire event.

People use far more than just their ‘sense of taste’ when dining so every aspect of your planned event can be replicated, from colour scheme and decor, to lighting and music, and of course the menu.

Menu tastings in the Senses Room accommodate up to ten people at a time, and are complimentary for clients with booked events.

‘Our Senses Room has become a much talked about innovation in event organisation.’

AUDIO / VISUAL

We offer leading edge technology throughout our events and meetings facilities. Our on-site audio visual and event specialists, InSync, have been part of our team for over 12 years offering a broad range of equipment and support.



THE GYM

Residential guests of Royal Lancaster London enjoy exclusive access to our excellently equipped on-site gym. You’ll find complimentary chilled water and towels. Being open 24 hours a day, and 7 days a week makes it suit any schedule.

EXCLUSIVE SPA OPTIONS

We offer a wide range of in-room spa treatments. Our guests also have exclusive access to our sister properties in-house spas, each with an excellent array of facilities. The elegant Landmark London in Marylebone and fashionable K West, just beyond Holland Park offer exclusive discounts and rates. Just talk to our Reception team who’ll be happy to arrange your visits.



222 Marylebone Road
London NW1 6JQ



Richmond Way
London W14 0AX

A ROOM WITH A VIEW



Rooms and suites at Royal Lancaster London combine timeless classic style, comfort and spectacular views of Hyde Park and the famous London skyline.



Each of our 411 guestrooms has been impeccably designed with every amenity in mind to ensure that every stay is a pure delight.



THE FINEST RESTAURANTS AND BARS



NIPA THAI

A hidden gem here in London, the award winning and Thai owned ‘Nipa Thai’ is considered the best Thai restaurant outside of Bangkok. The much celebrated cuisine is traditional and authentic, the interior, rich and atmospheric and the service warm and welcoming.

ISLAND GRILL

Our Island Grill, is an ideal choice at any time of day. With a focus on sustainability, the ever popular menu uses fresh, local ingredients that change with the seasons. The relaxed restaurant and buzzy bar offers inspired modern European dishes, crafted cocktails and fine wines.



Whether it be a chic dinner, a special occasion, a leisurely lunch, a fine high tea or simply a fresh ground coffee and croissant in comfort, we offer ambience and atmosphere in our exceptional range of restaurants and bars.

HYDE CAFÉ

From artisan coffee served with delicious Viennoiserie, homemade cakes & scones to Champagne, great wines and light bites – Hyde Café is your perfect hideaway.



PARK LOUNGE BAR

Relax and unwind in sumptuous comfort, enjoy a crafted cocktail, a glass of fine wine or perhaps just a calming cup of tea. Tempting snacks and small plates makes this an ideal spot to lounge throughout the day or evening.

AFTERNOON TEA

Our Signature Afternoon Tea is more than special, it’s enchanting, a masterpiece of treats and sweets complemented with the finest tea, or if you’re having fun, perhaps a cheeky glass of Champagne.

PARK RESTAURANT

Royal Lancaster London’s elegant dining room, prized for it’s stunning Hyde Park views. Bountiful breakfasts, artful and indulgent afternoon teas.

AT THE HEART OF LONDON

Our coveted location affords us spectacular views over Hyde Park and London's famous skyline.

Take a short stroll West to quaint and cultured Notting Hill and Holland Park. Walk East to Marble Arch and the vibrancy of Oxford Street or amble South through the park and find yourself in Kensington or Knightsbridge. Of course the rest of London is within easy reach, with Lancaster Gate tube station next door.



THE PERFECT LOCATION

BY AIR

We are within one hour from 4 international airports, with Heathrow being a mere 30 minutes away via nearby Paddington station.

BY RAIL

Paddington (6-minutes walk) is a major railway hub with frequent trains to Wales, Cornwall, Bath and many more.

BY UNDERGROUND

Lancaster Gate tube station is directly adjacent to the hotel, with step-free access to the popular Central Line.

BY ROAD

The hotel is less than 5 miles away from both M4 and M40 motorways. A number of trusted and well-known car parks are nearby.



ROYAL LANCASTER LONDON

MEETINGS AND EVENTS

Our dedicated and professional team look forward to working with you to create an exceptional event. We believe that when ‘the best service is delivered, the best experiences are taken away’

Just call or drop us an email.

Royal Lancaster London,
Lancaster Terrace, London W2 2TY

T +44 (0)207 551 6115

E events@royallancaster.com

www.royallancaster.com

